



ST. PAUL'S
EPISCOPAL
SCHOOL



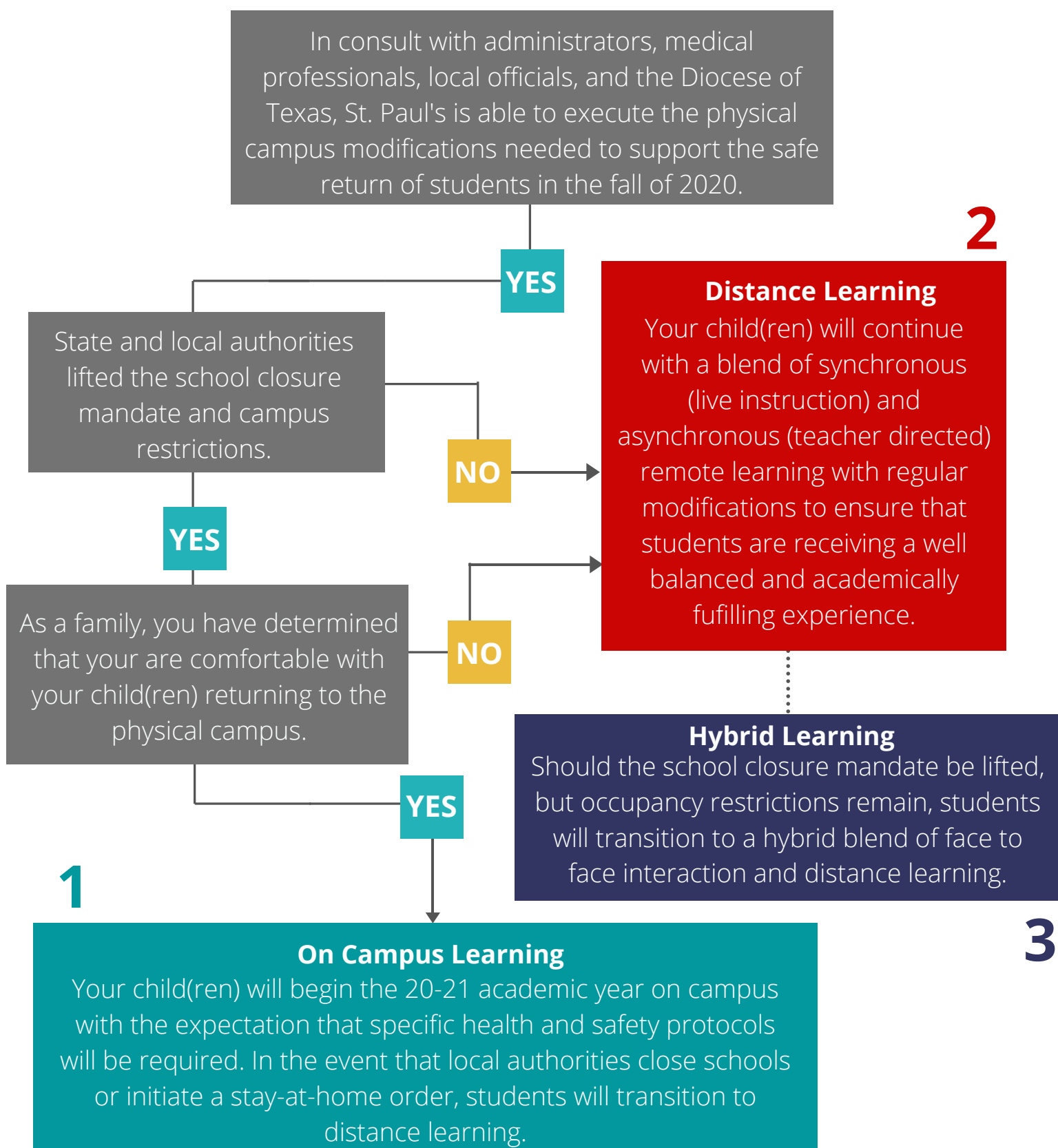
Re-Entry Plan 2020- 2021



Re-Entry Planning

The Process

The administration at St. Paul's is working diligently to develop a re-entry strategy that allows for flexibility, transparency, and prioritizes the health and safety of our community. St. Paul's is currently preparing the physical campus to support students in the fall of 2020, however we recognize that some families may not feel comfortable returning at that time. In response, the administration has developed 3 different re-entry options for families to navigate.



Option 1

On-Campus Learning

St. Paul's administration is preparing for on-campus school operations to resume in the fall of 2020. The community will follow specific health precautions which will be in accordance with our local, state, and federal, and diocesan requirements. Specific decisions and plans regarding our campus modifications will be finalized over the next several months.



The standard drop-off and pick-up times will *likely* remain the same.



After school enrichment and extended day programming will be offered for students in EC - 6th grade.

Preparing for Interruptions

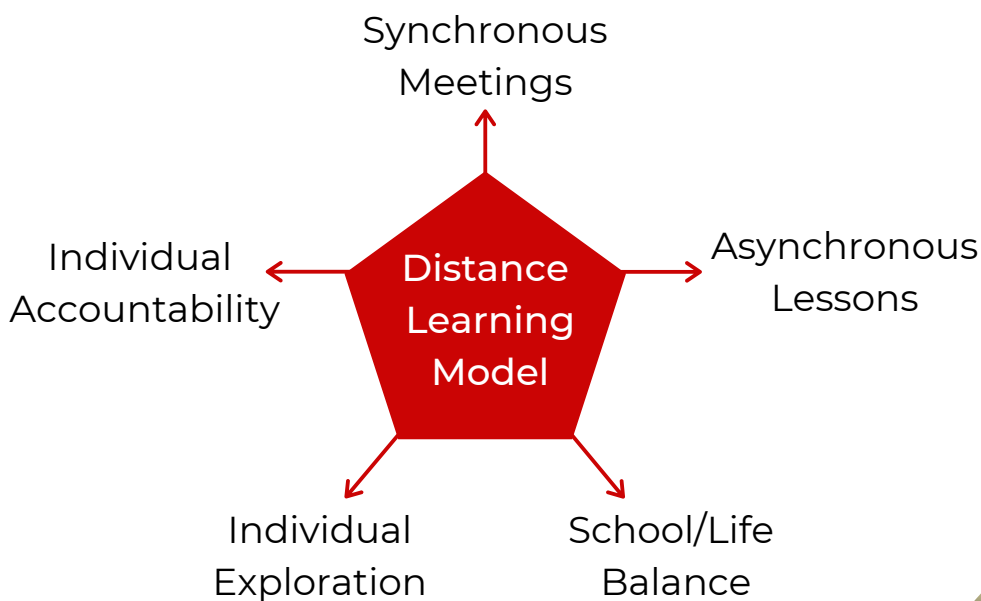
Following the recommendations from SAES, the Diocese, and the CDC, St. Paul's is preparing for waves of interruption to on-campus learning. In the event our local community experiences a spike in COVID-19 cases and an interruption of physical operations occurs, either distance or hybrid learning will begin within three days.



Distance Learning

Option 2

Distance Learning does not change our mission of educating the whole child in mind, body, and spirit. In this model, we continue to educate the whole child, encourage the pursuit of individual passions, promote life balance, build confidence, encourage play as a foundation of learning, and provide multi-sensory learning experiences. St. Paul's distance learning model blends scheduled synchronous (live) instruction with asynchronous (accessible anytime) instruction with a schedule intentionally designed to provide school/life balance, while also promoting personal accountability and responsibility.



Candidacy for Parent Choice

Due to the independent nature of distance learning, students interested in maintaining their status remotely must be a good candidate for this model. Families may also indicate a health or medical reason for their decision to remain in a remote capacity.



Hybrid Learning

Option 3

Hybrid Learning is a combination of on campus learning, and our existing distance model. The hybrid model will become necessary should school be allowed to open, but with restrictions. By creating a hybrid environment, St. Paul's students will still experience the social and emotional benefit of being in the classroom, as well as receive additional support via virtual platforms. The hybrid model will provide the highest level of safety for students while still allowing regular attendance. The administrative team has developed a comprehensive model that will meet the needs of all of our St. Paul's families- from early childhood students through 6th grade.

Hybrid Learning Elements

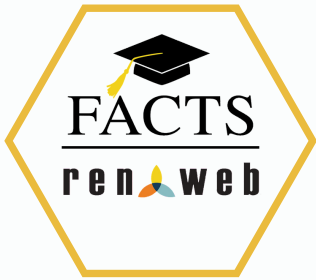
Combination of on-campus model and distance model.

Alternating schedules to reduce classroom size in grades EC-6

Promotes social and emotional development while still providing safety precautions



Digital Platforms



RenWeb will continue to be our school's main information system. Parents can access report cards, tuition information, announcements, and more.



Google Classroom is not new for St. Paul's students and grades 3-6 are accustomed to managing their work, discussions, and assignments through this platform. All class assignments, videos, and announcements will be housed in Google Classroom.



For students in Early Childhood - Grade 2, SeeSaw will be your online platform for viewing video lessons and uploading your student's documentation of work (pictures, videos, etc).



Zoom is a video conferencing platform that can be used to provide LIVE (synchronous) virtual class meeting space similar to GoogleMeets/Hangouts.



Private facebook pages will be used as a platform to share school wide. Town Hall, chapel, and presentations are posted daily. Teachers in early childhood will also use private pages as a means of sharing vital information and instruction with parents and students.